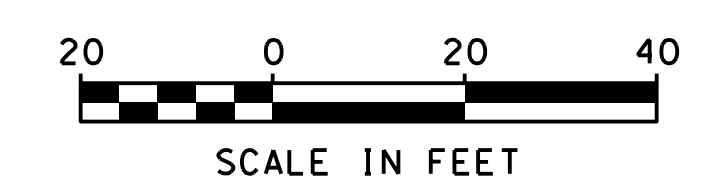
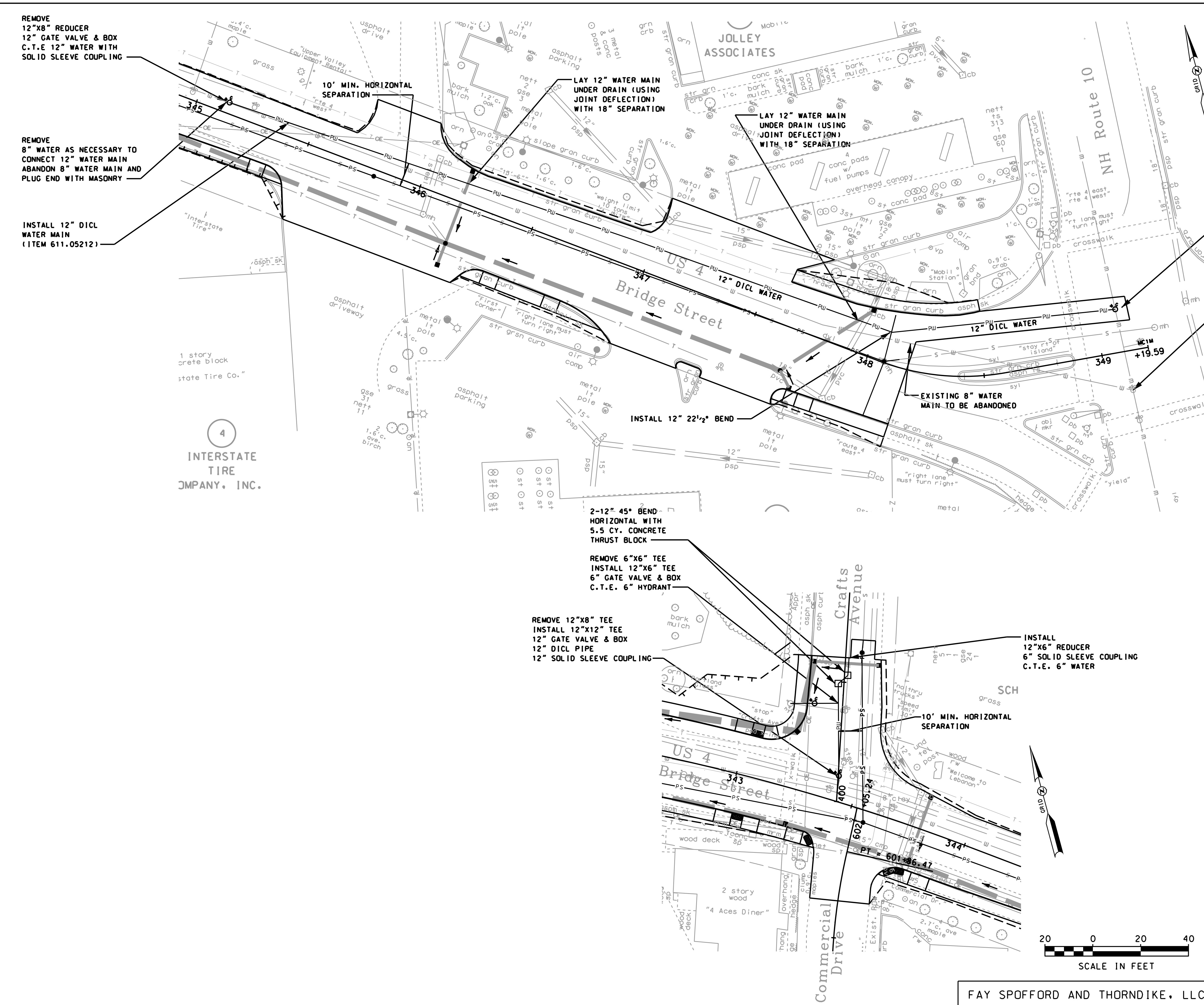


SDR PROCESSED	ARM	DATE	08/11
	DEM	DATE	05/13
NEW DESIGN	TAT	DATE	05/13
		DATE	
AS BUILT DETAILS			



STATE OF NEW HAMPSHIRE			
DEPARTMENT OF TRANSPORTATION • BUREAU OF BRIDGE DESIGN			
WATER MAIN REPLACEMENT PLAN			
DGN	STATE PROJECT NO.	SHEET NO.	TOTAL SHEETS
	14957	118	157

FAY SPOFFORD AND THORNDIKE, LLC

REVISIONS AFTER PROPOSAL	STATION	DESCRIPTION

REMOVE
12"x8" REDUCER
12" GATE VALVE & BOX
C.T.E 12" WATER WITH
SOLID SLEEVE COUPLING

REMOVE
8" WATER AS NECESSARY TO
CONNECT 12" WATER MAIN
ABANDON 8" WATER MAIN AND
PLUG END WITH MASONRY

INSTALL 12" DICL
WATER MAIN
(ITEM 611.05212)

4
INTERSTATE
TIRE
COMPANY, INC.

LAY 12" WATER MAIN
UNDER DRAIN (USING
JOINT DEFLECTION)
WITH 18" SEPARATION

LAY 12" WATER MAIN
UNDER DRAIN (USING
JOINT DEFLECTION)
WITH 18" SEPARATION

INSTALL
12"x12" TAPPING SLEEVE
12" GATE VALVE AND BOX

CUT AND CAP 8" WATER
CLOSE EXISTING 8" GATE
VALVE REMOVE BOX AND PLUG
END WITH MASONRY

INSTALL 12" 22 1/2" BEND

EXISTING 8" WATER
MAIN TO BE ABANDONED

2-12" 45° BEND -
HORIZONTAL WITH
5.5 CY. CONCRETE
THRUST BLOCK

REMOVE 6"x6" TEE
INSTALL 12"x6" TEE
6" GATE VALVE & BOX
C.T.E. 6" HYDRANT

REMOVE 12"x8" TEE
INSTALL 12"x12" TEE
12" GATE VALVE & BOX
12" DICL PIPE
12" SOLID SLEEVE COUPLING

INSTALL
12"x6" REDUCER
6" SOLID SLEEVE COUPLING
C.T.E. 6" WATER